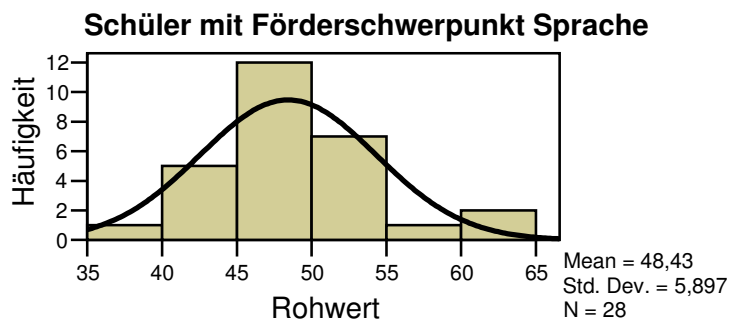
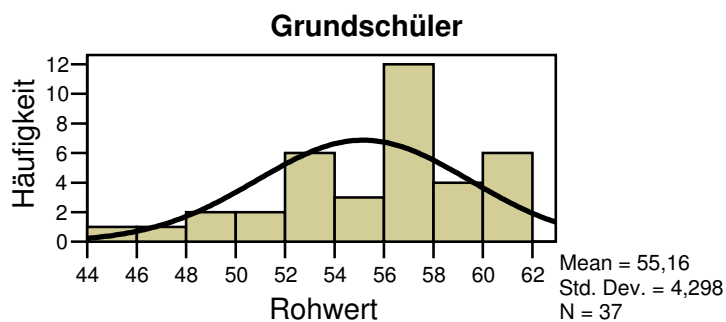
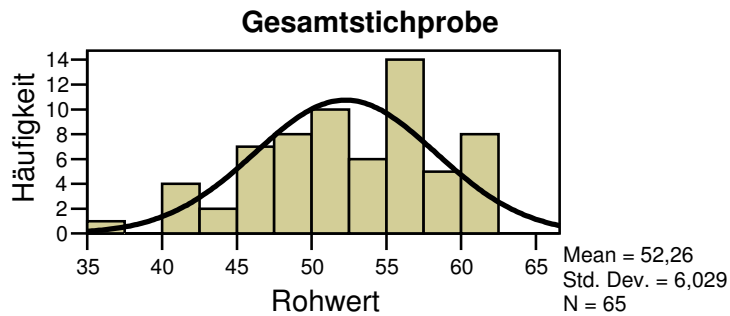


Anhang A

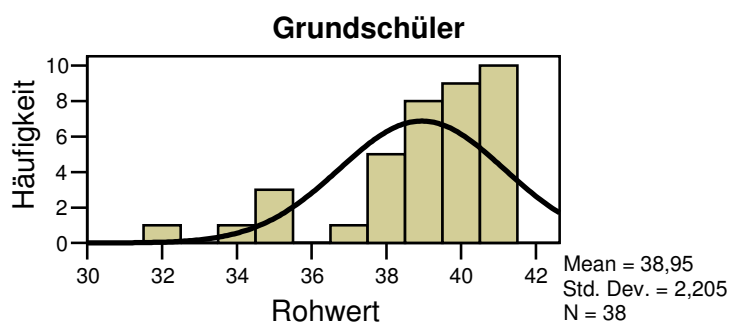
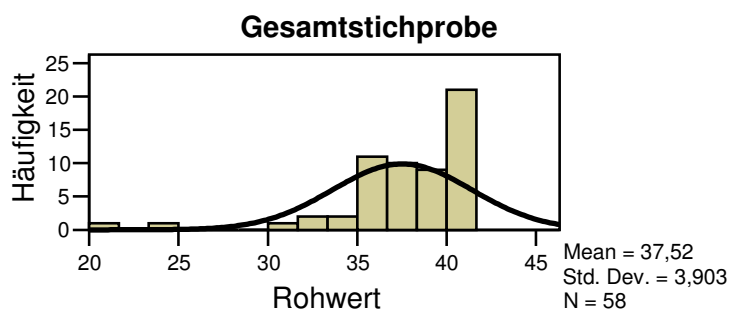
Histogramme der Rohwertverteilung im Vergleich zur Normalverteilung

Semantisch-lexikalische Sprachebene

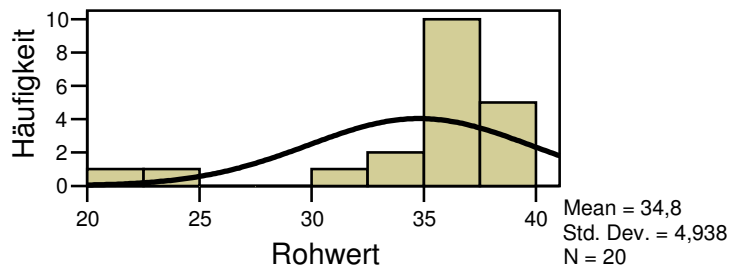
Untertest: Expressiver Wortschatz



Untertest: Rezeptiver Wortschatz

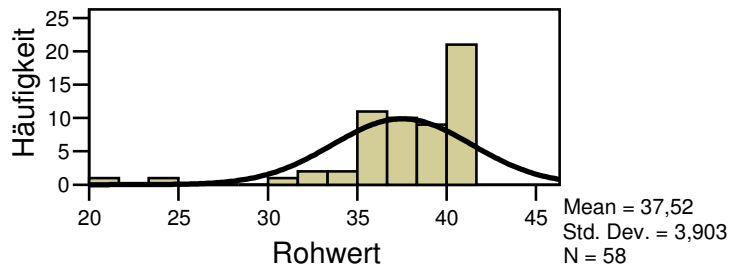


Schüler mit Förderschwerpunkt Sprache

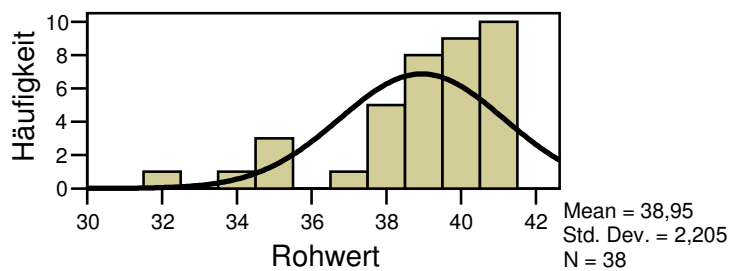


Untertest: Verblexikon

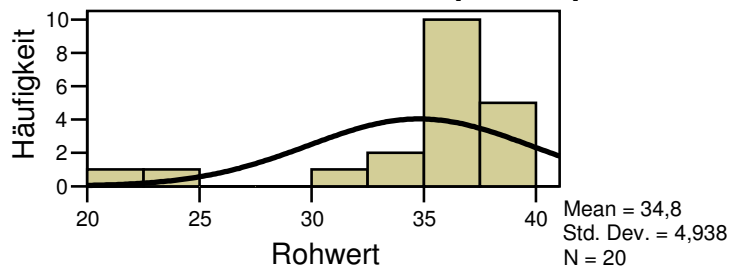
Gesamtstichprobe



Grundschüler



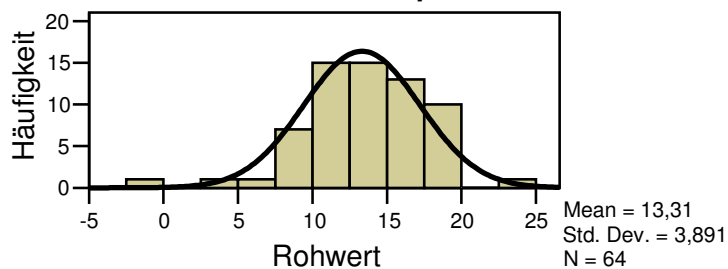
Schüler mit Förderschwerpunkt Sprache

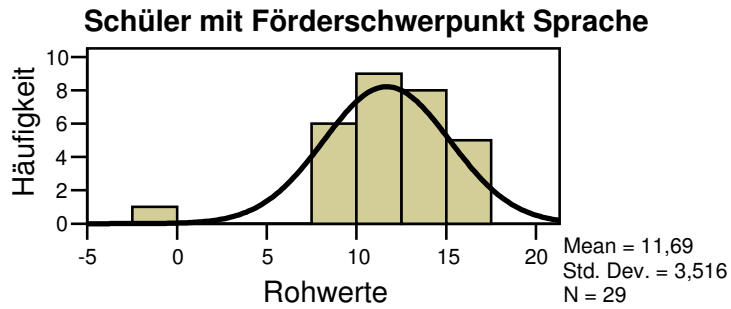
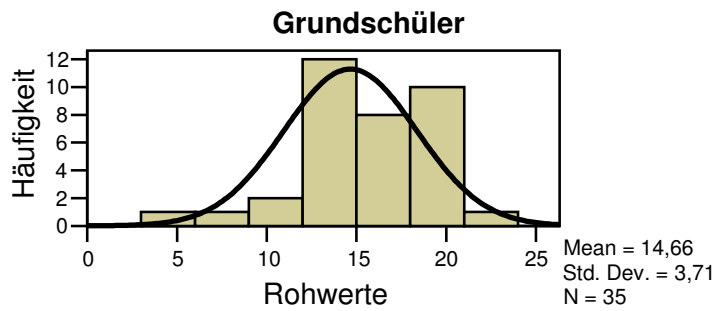


Kategorisierung nach Oberbegriffen

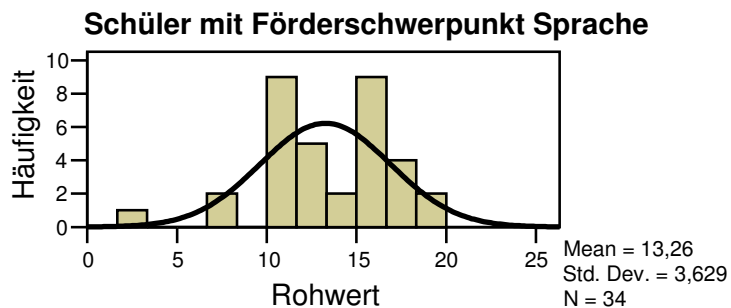
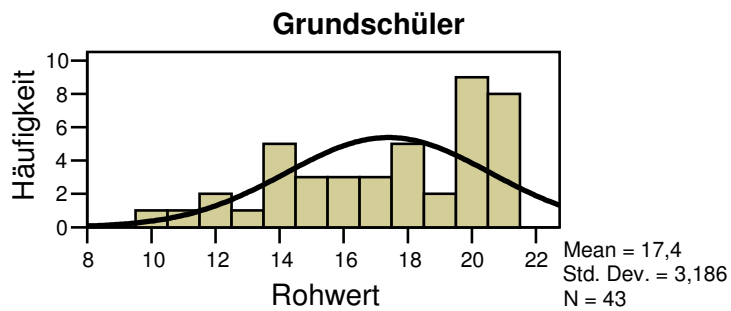
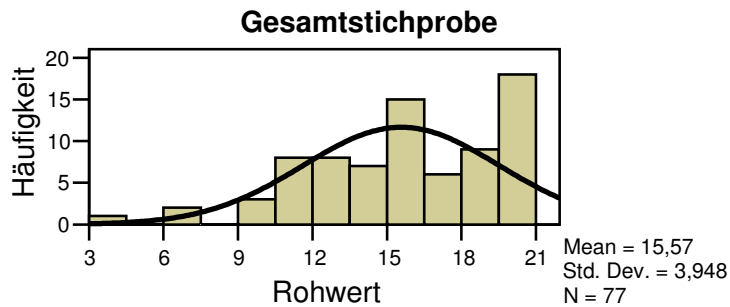
Untertest: Oberbegriffe

Gesamtstichprobe



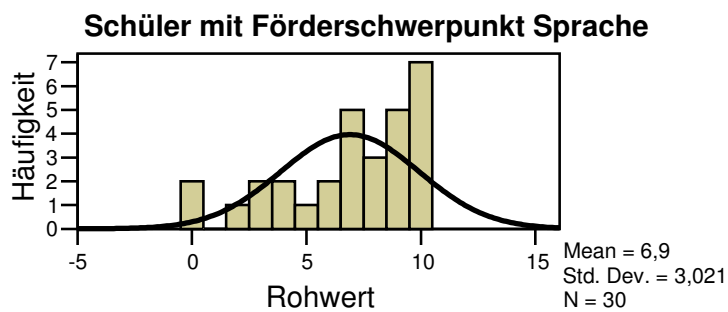
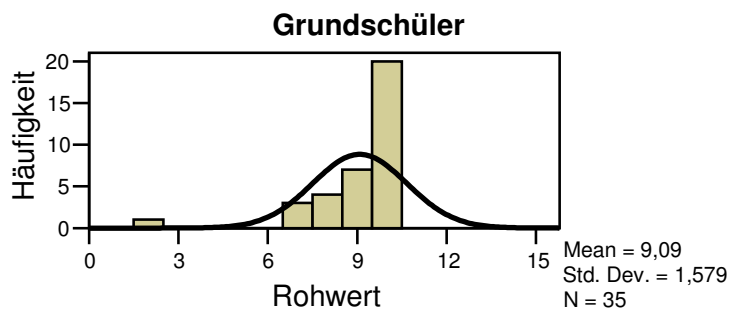
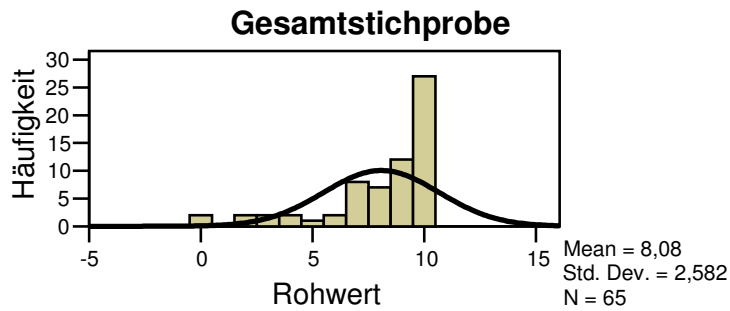


Untertest: Unterbegriffe

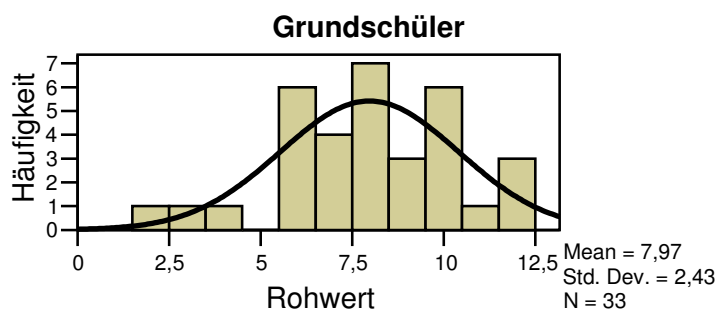
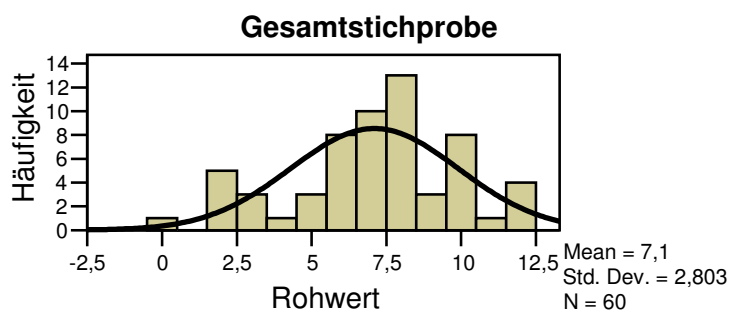


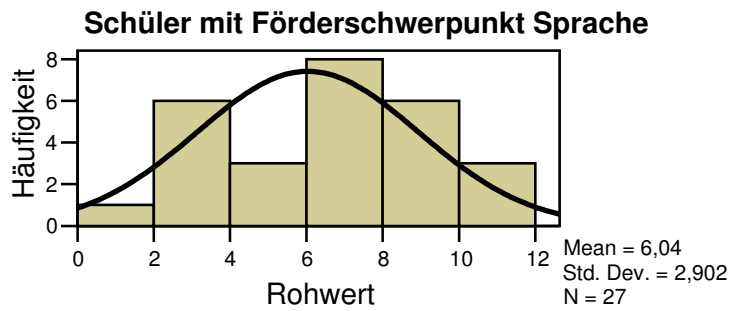
Syntaktisch-morphologische Sprachebene

Untertest: Akkusativ

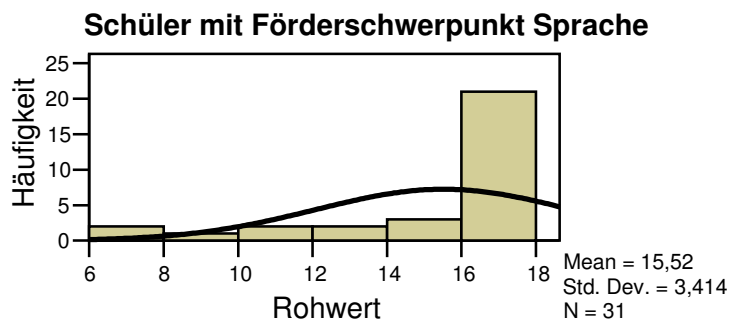
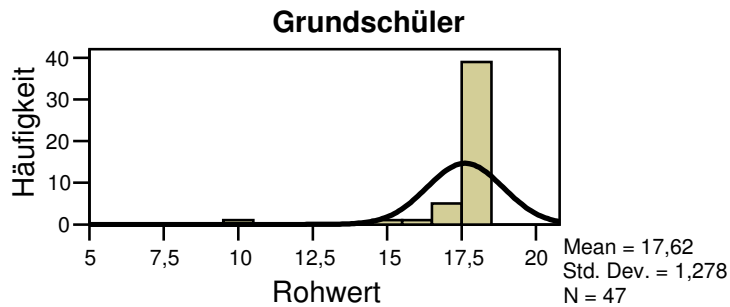
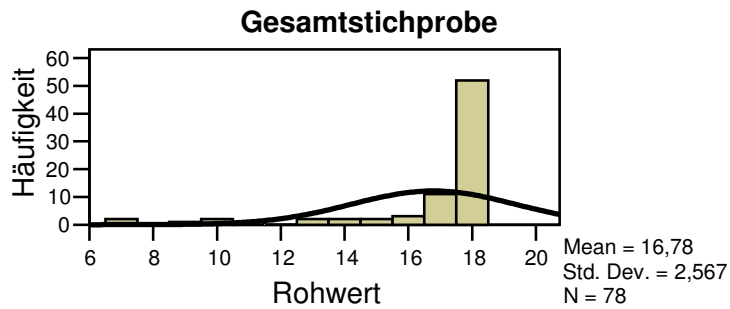


Untertest: Komplexe Syntax

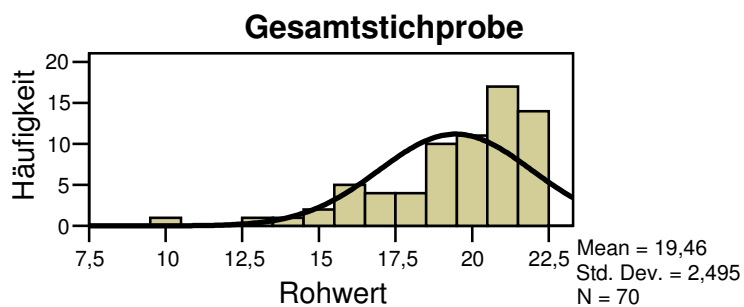


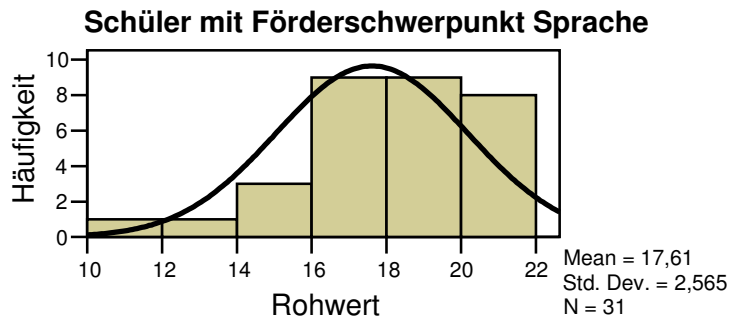
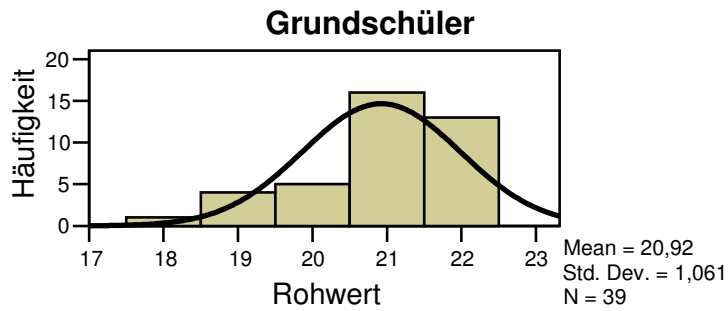


Untertest: Genus

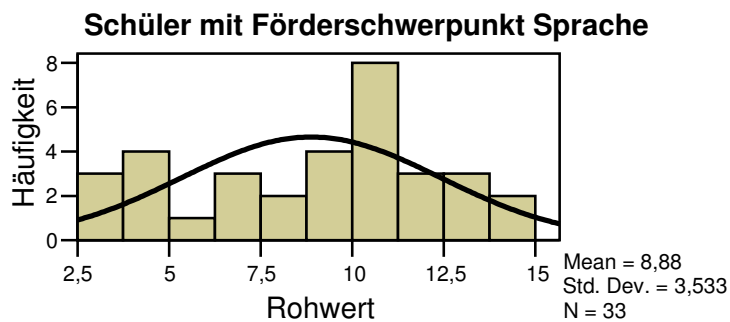
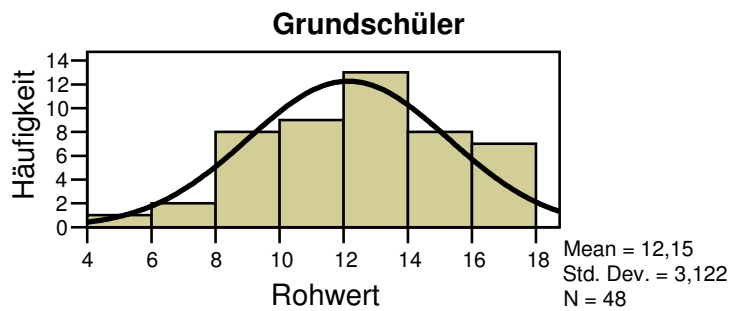
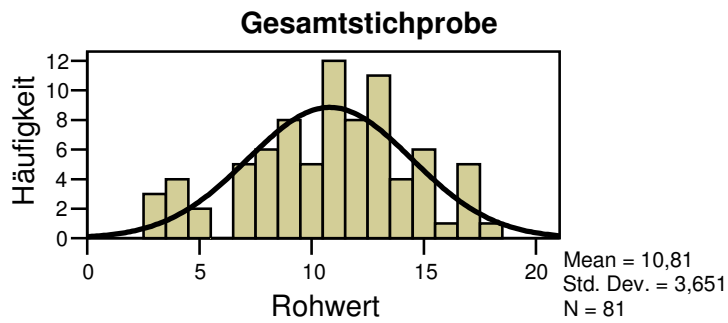


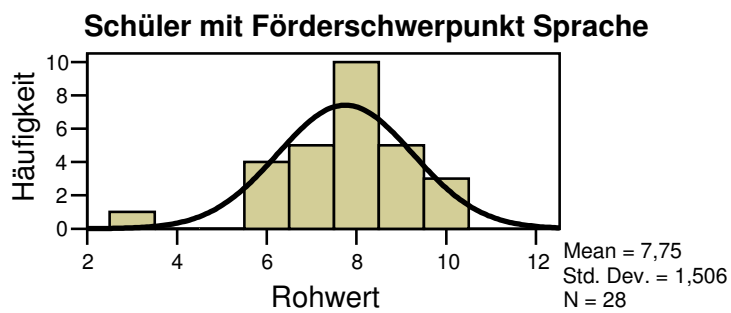
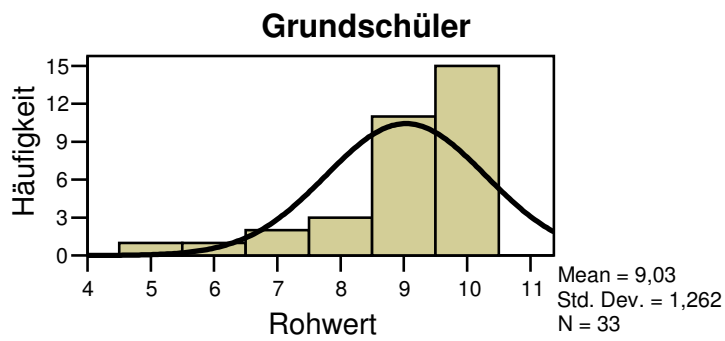
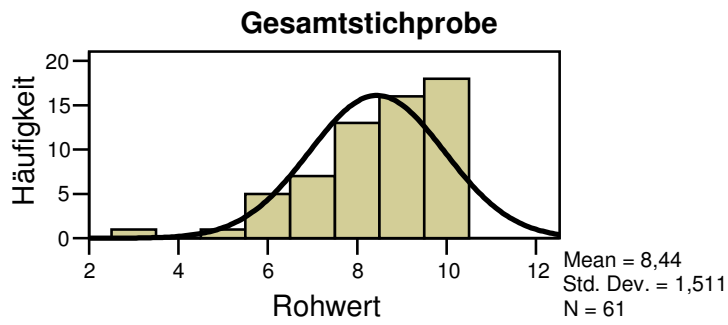
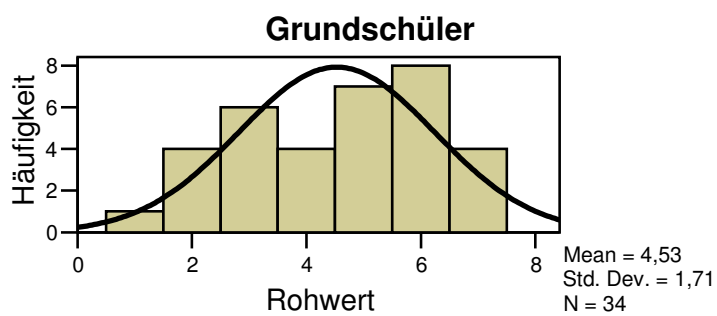
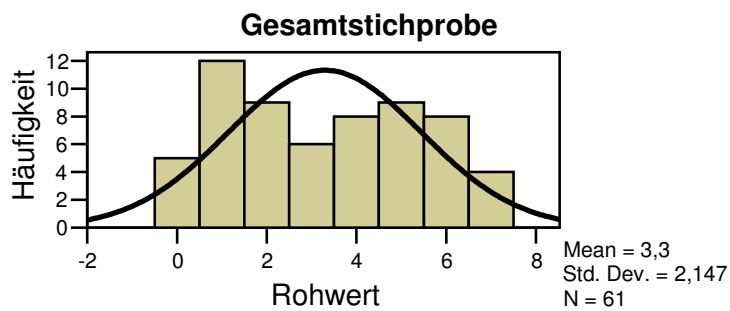
Untertest: Plural

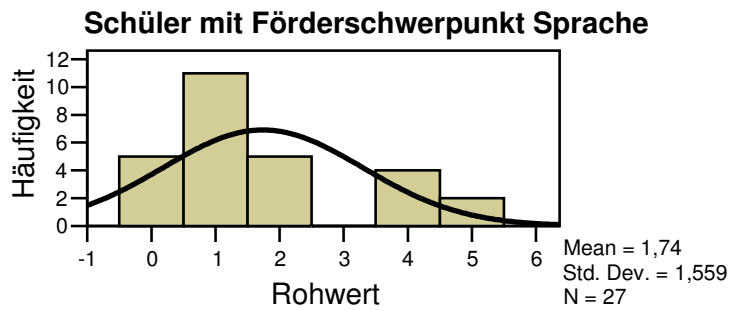




Untertest: Reflexionsfähigkeit

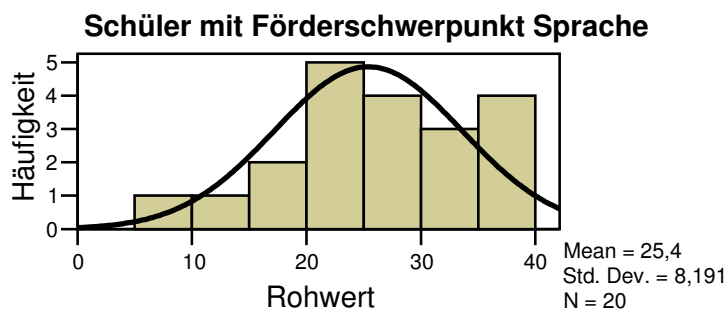
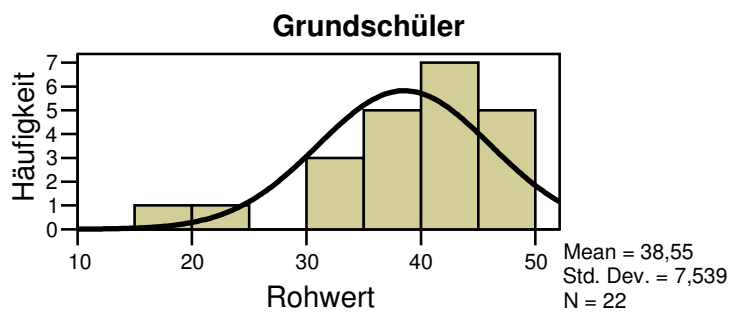
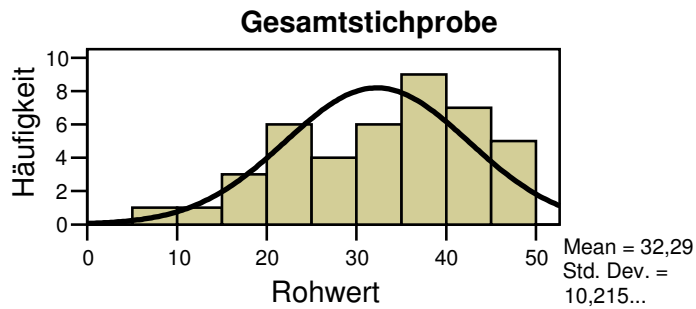


Untertest: Subjekt-Verb-Kongruenz**Untertest: Rekonstruktionsfähigkeit**

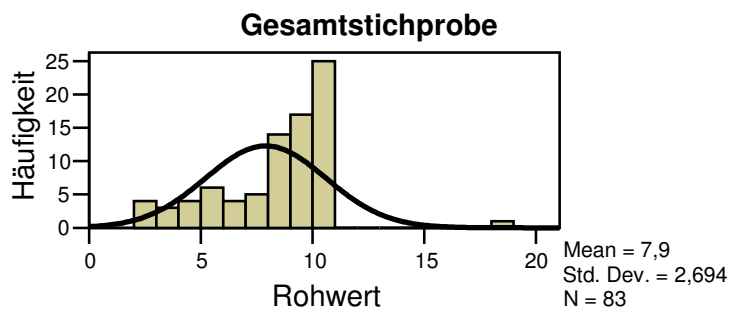


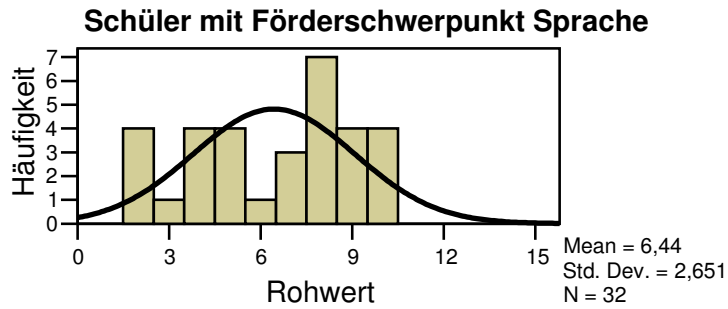
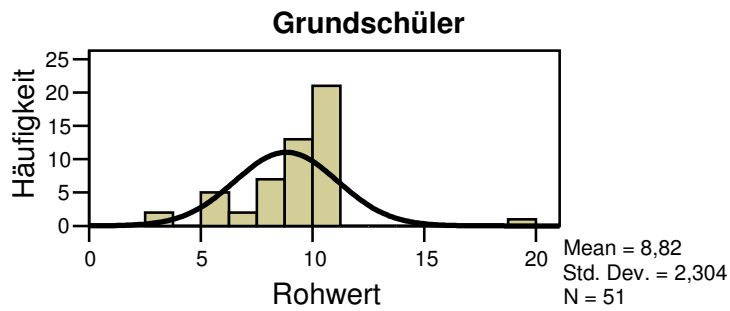
Sprachverständnis

Untertest: Wort- und Satzverständnis



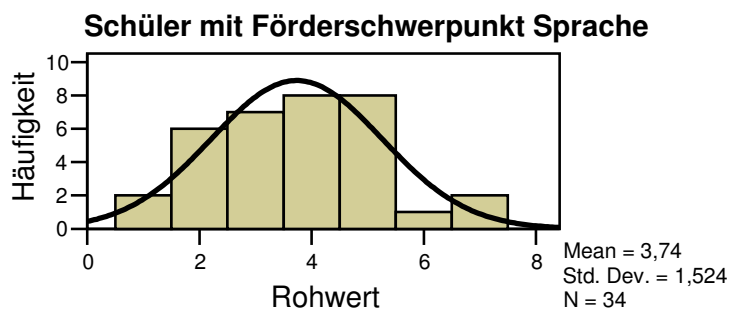
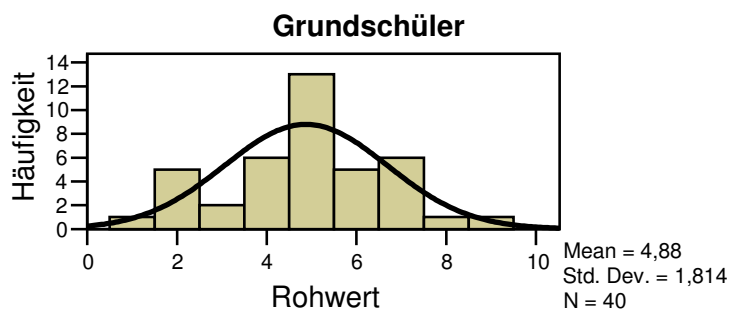
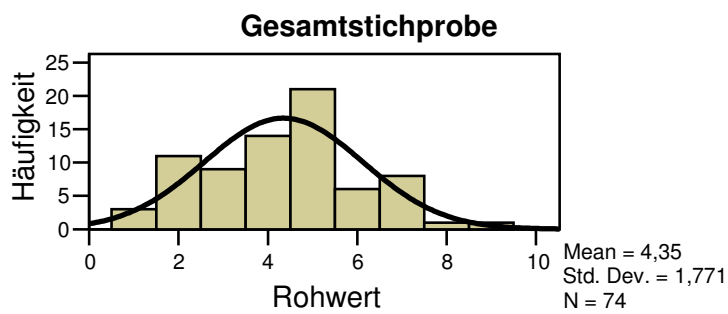
Untertest: Textverständnis





Auditive Speicherfähigkeit

Untertest: Silbenfolgen



Untertest: Zahlenfolgen